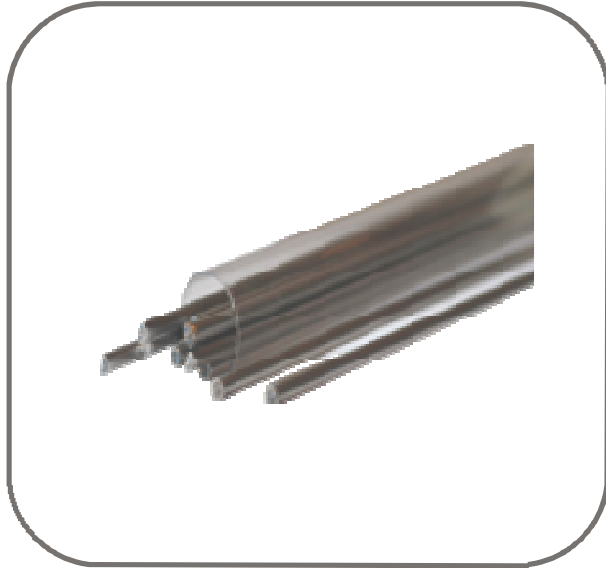


Semi Rigid Coaxial Cable - Stainless Steel 304 / Beryllium Copper SCBsrc02 Product Data Sheet



For use at microwave frequencies, this semi-rigid coaxial cable is available in straight lengths of 1, 2 or 3 meters (2m on stock), with either stainless steel or beryllium

Mechanical Characteristics

Outer Conductor Diameter, inch (mm)	0.0865 +/-0.001 (2.197+/-0.0254)
Dielectric Diameter, inch (mm)	0.066±0,001“1,68±0,0254mm
Center Conductor Diameter, inch (mm)	0.0201+/-0.0005 (0.511+/-0.0127)
Maximum Length, feet (meters)	20 (6.1 - 1 and 2m at stock)
Minimum Inside Bend Radius, inch (mm)	0.25 (6.35)
Weight, pounds/100 ft. (kg/100 meters)	1.25 (1.86)

Electrical Characteristics

Impedance, ohms	50+/-2.0		
Frequency Range GHz	DC-61		
Velocity of Propagation %	70		
Capacitance, pF/ft. (pF/meter)	29.3 (95.1)		
Typical Insertion Loss, dB/ft. (dB/meter) and Average Power Handling, Watts CW at 20 degrees Celsius and Sea level	Frequency	Insertion Loss	Power
	0.5 GHz	0.31 (1,02)	143,1
	1.0 GHz	0,44 (1,46)	100,8
	5.0 GHz	1,02 (3,33)	44,3
	10.0 GHz	1,46 (4,79)	30,9
	20.0 GHz	2,11 (6,94)	21,3
Corona Extinction Voltage, VRMS@60Hz	1500		
Voltage Withstand, VRMS @ 60 Hz	5000		



Environmental Characteristics

Outer Conductor Integrity Temperature, Deg Celsius	225
Maximum Operating Temperature, Deg Celsius	200

Materials

Outer Conductor	304 Stainless Steel
Dielectric	PTFE
Center Conductor	Silver Plated Beryllium Copper